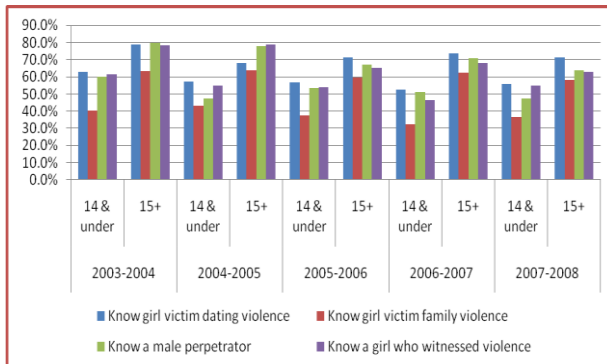


Chesterfield County Stop the Violence Project Student Survey ⁴

Violence

- Over 70% of females reported knowing a girl victim of dating violence
- Over 50% of females reported knowing a girl victim of family violence
- About 65% of females reported they knew a male perpetrator
- About 65% of females reported they knew a girl that witnessed violence

18% of ALL students surveyed reported being a victim of relationship violence.



Not surprisingly, older students were more likely to know a victim or perpetrator across all five years of administering the survey.

On average, 69.1% of students ages 15 and older knew someone who had experienced or witnessed violence while this was true for 50.3% of students ages 14 and younger.

2007-2008 Chesterfield County Stop the Violence Project Student Survey ⁴

Risky Behaviors

Students surveyed that reported yes to tobacco, alcohol, and illicit drug use; whether they had been forced to have sex; and whether they had been arrested in the last 6 months:

Tobacco use - 17.8%

Alcohol use - about 31%

Illicit drug use - about 12.5%

Forced sex - 3.7%

Arrested - 4.2%

Break down of tobacco, alcohol, illicit drug use; whether they had been forced to have sex; and whether they had been arrested by gender and age:

	Male	Female	To age 14	Age 15+
Tobacco	32.1%	34.1%	21.8%	49.2%
Alcohol	27.7%	33.7%	19.3%	48.0%
Alcohol excess	15.7%	19.5%	7.4%	33.0%
Illicit drugs	14.5%	11.6%	5.8%	22.3%
Forced sex	5.0%	3.0%	2.9%	4.5%
Arrested	8.2%	1.5%	4.1%	3.9%

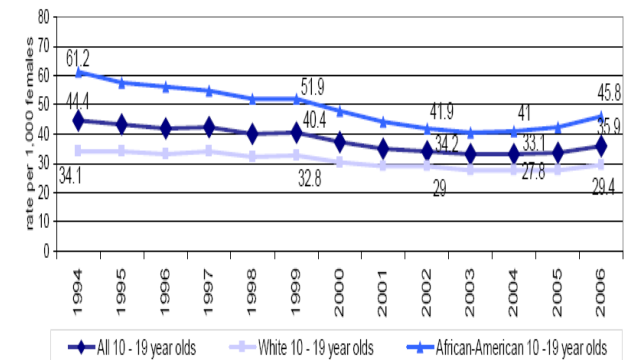
SC Campaign to Prevent Teen Pregnancy ² 2006 Data

Only eight other South Carolina counties have worse teen pregnancy rates than Chesterfield County. The rate was 45.6 pregnancies per 1,000 girls and 140 total pregnancies among girls ages 10-19.

For South Carolina

- Teen pregnancies increased 11% from 9,543 in 2004 to 10,604 in 2006 among girls ages 10-19
- In 2006, nearly two-thirds of all teen pregnancies in South Carolina are to 18-19 year olds.
- Of the 10,604 teen pregnancies in 2006, 27% were repeat teen pregnancies.

SC Pregnancy Rates: 10- 19 year olds
1994 - 2006



Youth Risky Behavior Surveillance System: South Carolina 2007¹

Student sample size of 1,241 among students in 9-12 grades from January-December 2007

Percentages for Tobacco Use			
	Female	Male	Total
Lifetime cigarette use	55.5	59.6	57.6
Smoked a whole cigarette for the 1 st time before age 13	13.0	17.4	15.3
Current cigarette use	17.4	18.1	17.8
Current frequent cigarette use	7.8	8.5	8.1
Smoked >10 cigarettes/day	11.9	n/a	16.2
Smoked cigarettes on school property	5.7	7.0	6.3
Lifetime daily cigarette use	12.1	14.0	13.1

Percentages for Alcohol and Marijuana Use			
	Female	Male	Total
Lifetime alcohol use	70.0	69.4	69.7
Drank alcohol before age 13	20.8	29.6	25.3
Current alcohol use	38.0	35.4	36.8
Episodic heavy drinking	18.8	21.3	20.1
Drank alcohol on school property	4.2	5.0	4.7
Lifetime marijuana use	32.2	40.9	36.6
Tried marijuana before age 13	6.0	13.5	9.7
Current marijuana use	14.1	23.1	18.6
Used marijuana on school property	1.7	4.8	3.3

Percentages for Sexual Behaviors			
	Female	Male	Total
Ever had sexual intercourse	48.5	54.6	51.5
Had first sexual intercourse before age 13	5.6	13.7	9.5
Had sexual intercourse with 4 or more people during their life	14.6	21.0	17.7
Currently sexually active	27.3	34.5	35.9
Alcohol or drug use before last sexual intercourse	16.8	21.1	18.8
Condom use	57.2	68.2	62.4
Birth control pill use	15.8	10.6	13.4

Data Sources

1. Centers for Disease Control and Prevention. Youth Risk Behavior Surveillance. Surveillance Summaries, June 6, 2008. MMWR 2006; 55(No. SS-4). This report summarizes results from the national survey, 39 state surveys, and 22 local surveys conducted among students in grades 9–12 during 2007.

2. South Carolina Campaign to Prevent Teen Pregnancy 2008 data report. This is the most recent data available

4. James R. McDonell, D.S.W. , Brief Report on findings from the Student Survey, 2003-2008, funded by grant #5H79SP13611-02 from the Substance Abuse and Mental Health Services Administration, U.S. Department of Health and Human Services. Chesterfield County youth in 6-12 grades were surveyed through a convenience sample every school year.

**CHESTERFIELD COUNTY
YOUTH DEVELOPMENT
COALITION**



Our vision is to create a healthy environment for youth to become productive citizens.

Our mission is to work together in changing community attitudes and providing support, assistance, and guidance needed to prevent risky behaviors among all youth in Chesterfield County.



**CHESTERFIELD
C O U N T Y**
Coordinating Council

Chesterfield County Coordinating Council
P.O. Box 648
Chesterfield, SC 29709